

Specifications

| Models | Z-45 DC & FE | |
|------------------------------------|--------------|---------|
| Measurements | US | Metric |
| Working height maximum* | 51 ft 8 in | 15.92 m |
| Platform height maximum | 45 ft 8 in | 13.92 m |
| Horizontal reach maximum | 22 ft 9 in | 6.94 m |
| Up and over clearance maximum | 24 ft 7 in | 7.50 m |
| A Platform length | 2 ft 6 in | 0.76 m |
| B Platform width | 6 ft | 1.83 m |
| C Height - stowed | 7 ft 6 in | 2.29 m |
| D Length - stowed | 20 ft 1 in | 6.11 m |
| E Width | 7 ft 6 in | 2.29 m |
| F Wheelbase | 6 ft 8 in | 2.03 m |
| G Ground clearance - center | 1 ft 4 in | 0.41 m |

Productivity

| | | |
|--------------------------------|---------------------|-----------|
| Lift capacity | 660 lbs | 300 kg |
| Platform rotation | 160° | 160° |
| Vertical jib rotation | 135° | 135° |
| Turntable rotation | 355° non-continuous | |
| Turntable tailswing | 1 ft 3 in | 0.37 m |
| Drive speed - stowed | 4.0 mph | 6.44 km/h |
| Drive speed - raised** | 0.68 mph | 1.09 km/h |
| Gradeability - 4WD - stowed*** | 45% | 45% |
| Turning radius - inside | 5 ft 6 in | 1.68 m |
| Turning radius - outside | 14 ft 9 in | 4.50 m |
| Controls | 24V DC proportional | |
| Tires | 315/55 D20 | |

Power

| | | |
|-------------------------|------------------------------------------|---------|
| Drive system | 34 V 3-Phase AC | |
| Power source | 48 V DC (eight 6V batteries) | |
| | 335 Ah capacity (AGM, standard on FE) | |
| | 315 Ah capacity (FLA, standard on DC) | |
| | 24.8 hp (18.5kW) Kubota diesel T4f D1105 | |
| | AC generator (FE only) | |
| Auxiliary power unit | 12V DC | 12V DC |
| Hydraulic tank capacity | 11.6 gal | 43.9 L |
| Fuel tank capacity | 17 gal | 64.35 L |

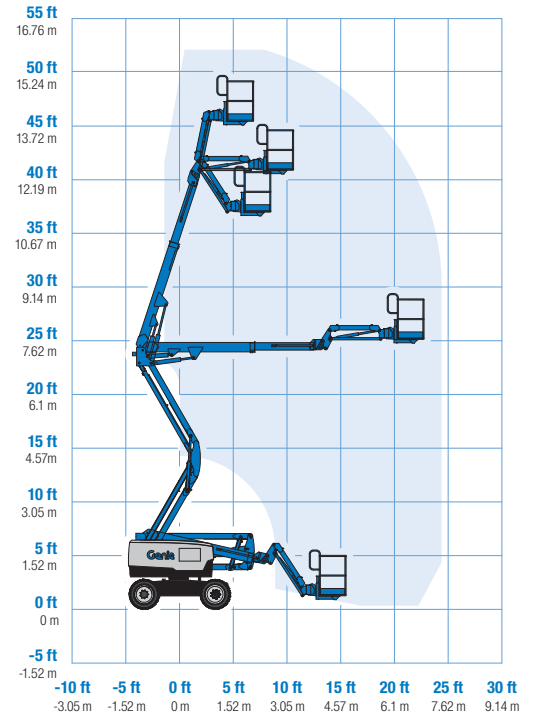
Weight****

| | | |
|---------|------------|----------|
| Z-45 DC | 14,064 lb | 6,379 kg |
| Z-45 FE | 14,460 lbs | 6,559 kg |

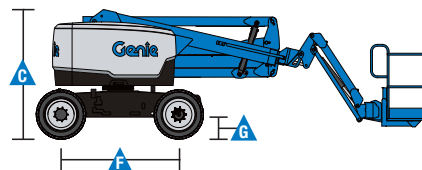
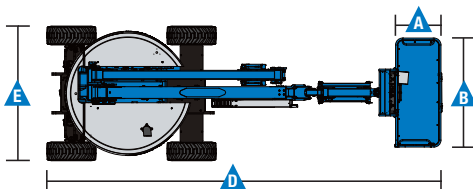
Standards Compliance

ANSI A92.20, CSA B354.6, EN 280, AS 1418.10

Range Of Motion Z-45 DC & FE



* The metric equivalent of working height adds 2 m to platform height. U.S. adds 6 ft to platform height.
 ** In lift mode (platform raised), the machine is designed to operate on firm, level surfaces only.
 *** Gradeability applies to driving on slopes. See operator's manual for details regarding slope ratings.
 **** Weight will vary depending on options and/or country standards.



Features

Standard Features

Measurements

Z-45 DC & FE

- 51 ft 8 in (15.92 m) working height
- 22 ft 9 in (6.94 m) horizontal reach
- 24 ft 7 in (7.5 m) up and over clearance
- Up to 660 lbs (300 kg) lift capacity

Productivity

- 5 ft (1.52 m) jib boom with 135° working range
- Digital hour meter with battery charge indicator and diagnostic readout
- 4Wheel AC electric drive system
- Variable speed high efficiency hydraulic power unit
- Self-leveling platform
- Hydraulic platform rotation
- Proportional joystick controls
- Drive enable
- AC power cord to platform
- Horn
- Hour meter
- Tilt alarm
- Flashing beacon and travel alarm
- 355° non-continuous turntable rotation
- Locking turntable covers
- Electronic traction control
- Lift Tools™ Work Tray
- Entry toeboard
- Lift Connect™ Telematics
- Lift Guard™ Contact Alarm
- Dual parallelogram for vertical wall tracking
- Platform Load Sense

Power

- 48 V DC battery pack (335Ah AGM maintenance-free) (standard on FE)
- 48 V DC battery pack (315Ah FLA) (standard on DC)
- 12V DC auxiliary power
- 25A temperature compensated smart charge system
- Battery charge indicator
- Low battery voltage interrupt

Easily Configured To Meet Your Needs

Platform Options

- Steel 6 ft (1.83 m) dual entry with side swing gate

Jib

- 5 ft (1.52 m) jib boom with 135° working range

Engine

- 24.8 hp (18.5 kW) Kubota diesel T4f

Drive

- 4WD Electric AC (standard)

Axle

- Active oscillation (standard)

Tire Options

- Rough terrain non-marking foam filled (standard)
- Rough terrain foam-filled

Options & Accessories

Productivity

- Lift Guard Platform Mesh - Half
- Lift Guard Platform Mesh - Full
- Platform top auxiliary rail
- Air line to platform
- Specialty hydraulic oil (fire resistant or biodegradable)
- Hostile environment kit
- Thumb rocker steer
- Pipe cradle (pair)*
- Panel cradle package
- Lockable platform control box cover
- Work and drive light package
- Operator Protective Structure*
- Fall Arrest Bar
- Lift Tools Expo Installer*
- Lift Tools Access Deck*

Power

- 2000W 120V/60Hz, 240V/50Hz or 110V/50Hz power inverter
- 48 V DC battery pack (335Ah AGM maintenance-free) (standard on FE)
- 48 V DC battery pack (315Ah FLA) (standard on DC)



* Available aftermarket only

Genie United States

6464 185th Ave. NE
Redmond, WA 98052
Telephone +1 (425) 881-1800
Toll Free in USA/Canada +1 (800)-536-1800
Fax +1 (425) 883-3475

Distributed By:

Effective Date: January, 2020. Product specifications and prices are subject to change without notice or obligation. The photographs and/or drawings in this document are for illustrative purposes only. Refer to the appropriate Operator's Manual for instructions on the proper use of this equipment. Failure to follow the appropriate Operator's Manual when using our equipment or to otherwise act irresponsibly may result in serious injury or death. The only warranty applicable to our equipment is the standard written warranty applicable to the particular product and sale and we make no other warranty, express or implied. Products and services listed may be trademarks, service marks or trade names of Terex Corporation and/or their subsidiaries in the USA and many other countries. Terex, Genie and AWP are registered trademarks of Terex Corporation or its subsidiaries. © 2020 Terex Corporation.